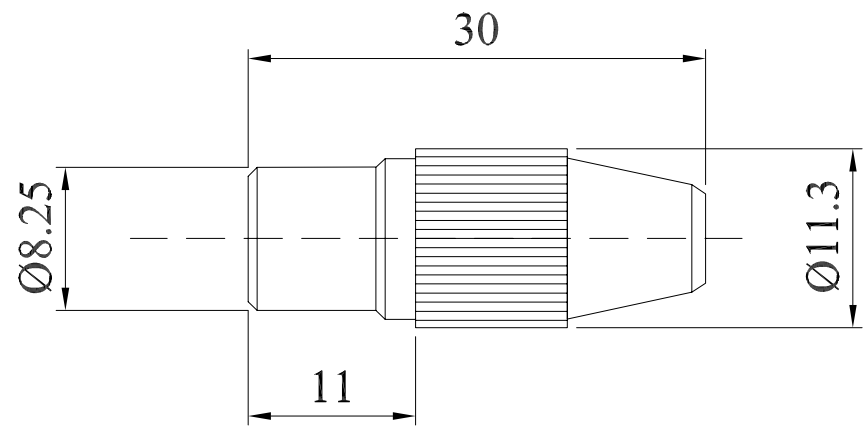


A range of standard in-line sockets. A rigid acetal cap is offered in two colours, black or red.

- internal cable clamp for secure cable connection.
- maximum cable size 4,1mm.
- two colours available, black or red.

MATERIAL	
CABLE	: Brass,
CLAMP	silver plated
SPRING	: Brass,
	nickel plated
BODY	: Brass,
	nickel plated
CAP	: Acetal
RATINGS	
	: 5 Amps at 200 Vdc
	150 Vac max.
INSULATION	
RESISTANCE	: 100 MW at 500 Vdc

Dimensions



ORDER CODE	COLOUR
433-0100	BLACK
433-0500	RED

CONVERTED FROM P0779 ISS1 (01.03.95) IN JAN 2003