

WA502 DUAL RACK MOUNT KIT

The Shure WA502 Dual Rack Mount Kit is a half rack mounting assembly that is compatible with the HR standard. A single WA502 kit can be used to mount an SC4 or LX4 receiver next to other equipment compatible with the HR format. Two WA502 kits can be used to mount two SC4 receivers side by side.

USING TWO WA502 KITS TO LINK TWO RECEIVERS

1. Remove and save the screws from the sides of each receiver, as shown in Figure 1.

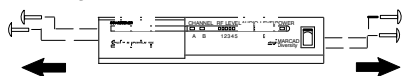


FIGURE 1

2. Place the link bar from one WA502 kit over the holes on the left side of one receiver. Then place the link bar from the second WA502 kit over the holes on the right side of the other receiver. See Figure 2 below. Secure the link bars with two of the screws removed from the receiver in Step 1.

NOTE: The threaded hole in the link bar on the left receiver should be

positioned toward the rear. The threaded hole in the link bar on the right receiver should be positioned toward the front.

3. Place the receivers next to each other so that the holes in the link bars line up. See Figure 2.
4. Insert one of the supplied small screws into the threaded hole on the top link bar. Insert another supplied screw into the threaded hole on the bottom link bar. See Figure 2.
5. Secure the supplied brackets to the ends of the joined receivers, using the remaining screws removed in Step 1. See Figure 2.

INSTALLING TWO LINKED RECEIVERS INTO A RACK

1. Insert the linked receivers into the equipment rack.
2. Secure the brackets to the rack with the supplied screws. See Figure 2.

NOTE: For more information on rack mounting, call Shure Customer Service at 1-800-25-SHURE. Outside the U.S.A., call 847-600-2000.

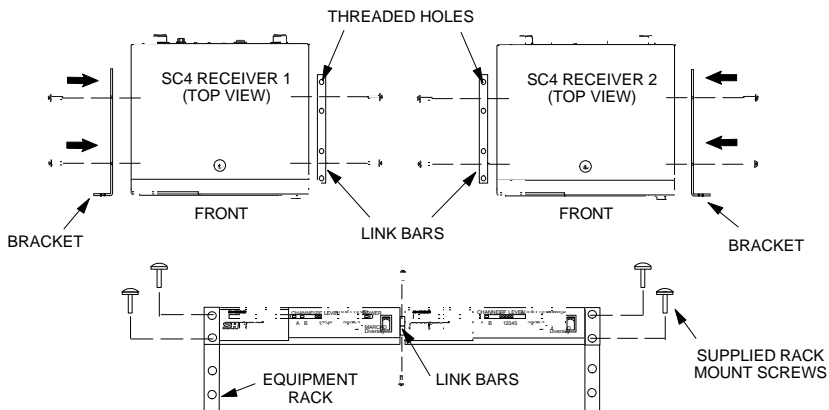


FIGURE 2