

# COLS101

slimline column speaker for speech  
100V



COLS101 is an extra slim column speaker that is especially suitable for sound reproduction in acoustically difficult venues.

Advanced technology guarantees optimized sound dispersion and improved speech intelligibility. This decreases microphone feedback in reverberant locations such as houses of worship, sport facilities, public buildings as well as conference facilities and auditoriums.

This speaker offers timeless design combined with impeccable sound reproduction.

The COLS101 has 10 x 2" woofers and 1 x 1" tweeter. A standard wall bracket and installation tools are included.

The standard color of COLS101 is white. From 12 pieces on, the COLS101 speakers can be painted in any RAL color (REF: PAINTCOL).

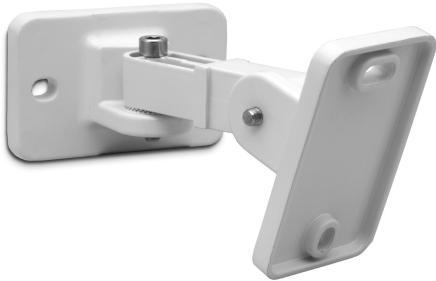
## TECHNICAL SPECIFICATIONS

height in mm	721	width in mm	66
depth in mm	66	loudspeaker system	multiple
woofer size in inch	10 x 2	woofer cone material	paper
tweeter size in inch	1	mounting system	L-brackets
colour	white	100V transformer power taps in watts	40 - 20 - 10
impedance in ohms	8	low impedance dynamic power in watts	60
SPL 1W/1m in dB	91	max SPL 1m in dB	106
frequency response in Hz	200 - 20K	main construction material	aluminium
grille main material	aluminium	IP rating	66
applicable low impedance	Yes	applicable in 100V	Yes
Horizontal dispersion angle 1000 Hz	180°	Vertical dispersion angle 1000 Hz	40°

[MORE PICTURES](#)



## ACCESSORIES



### **COLSBRA**

Bracket for easy tilting and rotating of COLS sound columns