

# COLS41

slimline column speaker for speech  
100V



COLS41 is an extra slim column speaker that is especially suitable for sound reproduction in acoustically difficult venues.

Advanced technology guarantees optimized sound dispersion and improved speech intelligibility. This decreases microphone feedback in reverberant locations such as houses of worship, sport facilities, public buildings as well as conference facilities and auditoriums.

This speaker offers timeless design combined with impeccable sound reproduction.

The COLS41 has 4 x 2" woofers and 1 x 1" tweeter. A standard wall bracket and installation tools are included.

The standard color of COLS41 is white. From 12 pieces on, the COLS41 speakers can be painted in any RAL color (REF: PAINTCOL).

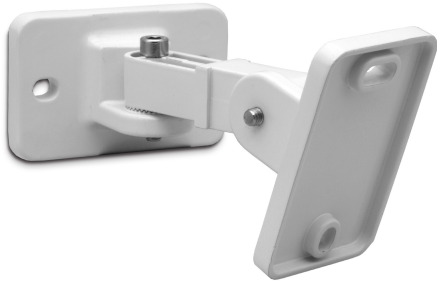
## TECHNICAL SPECIFICATIONS

height in mm	400	width in mm	66
depth in mm	66	loudspeaker system	multiple
woofer size in inch	4 x 2	woofer cone material	paper
tweeter size in inch	1	mounting system	L-brackets
colour	white	100V transformer power taps in watts	20 - 10 -5
impedance in ohms	8	low impedance dynamic power in watts	30
SPL 1W/1m in dB	88	max SPL 1m in dB	100
frequency response in Hz	250 - 20K	main construction material	aluminium
grille main material	aluminium	IP rating	66
applicable low impedance	Yes	applicable in 100V	Yes
Horizontal dispersion angle 1000 Hz	180°	Vertical dispersion angle 1000 Hz	110°

MORE PICTURES



## ACCESSORIES



### **COLSBRA**

Bracket for easy tilting and rotating of COLS sound columns