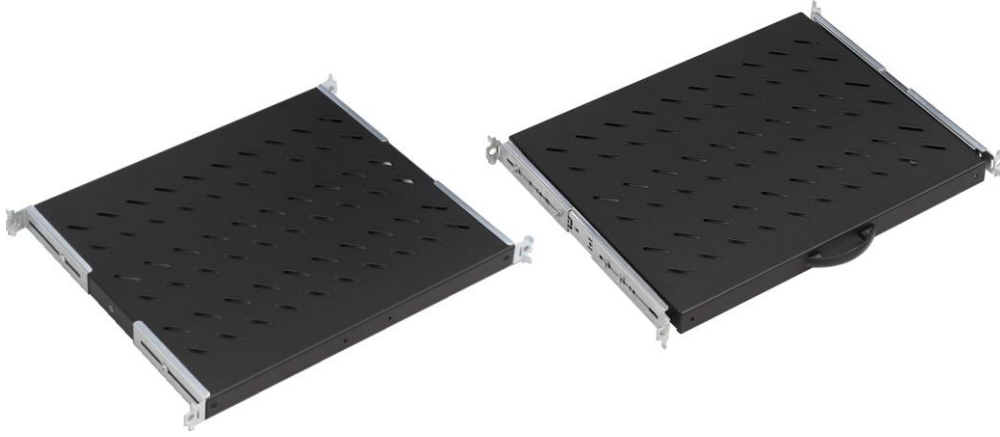


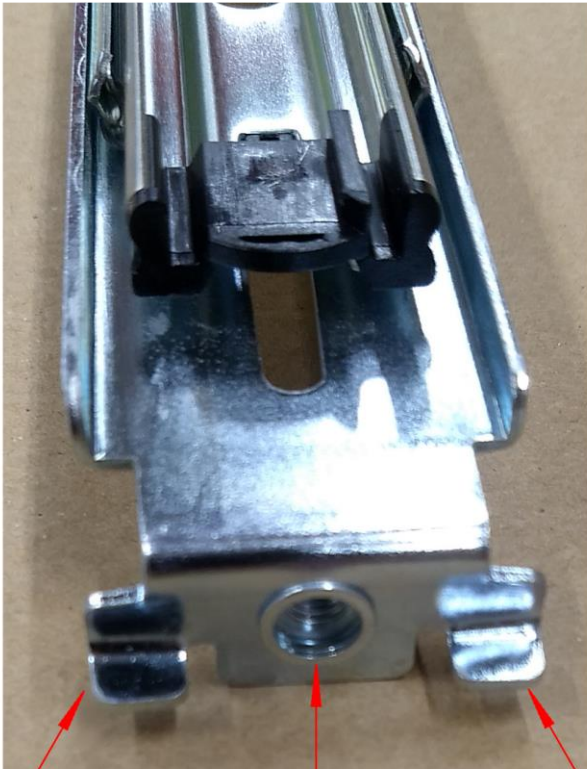
Canford fixed and sliding rack shelf mounting details



- 12-7030 CANFORD FIXED SHELF 370mm deep for 600 deep racks, universal, grey
- 12-7031 CANFORD FIXED SHELF 370mm deep for 600 deep racks, universal, black
- 12-7032 CANFORD FIXED SHELF 570mm deep for 800 deep racks, universal, grey
- 12-7033 CANFORD FIXED SHELF 570mm deep for 800 deep racks, universal, black
- 12-7034 CANFORD FIXED SHELF 770mm deep for 1000 deep racks, universal, grey
- 12-7035 CANFORD FIXED SHELF 770mm deep for 1000 deep racks, universal, black

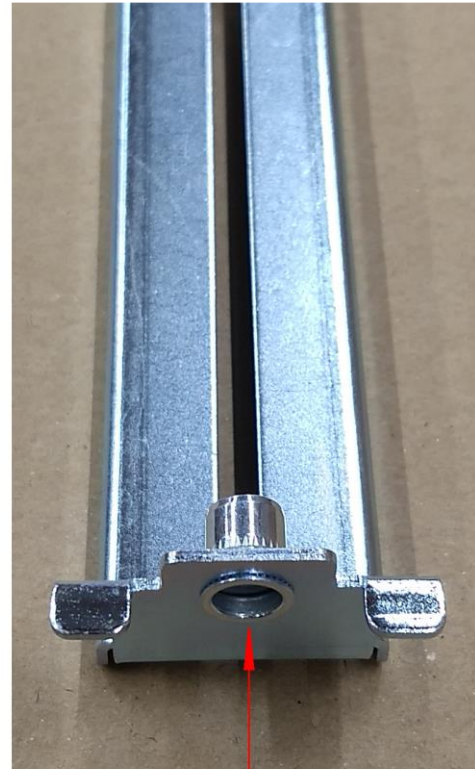
- 12-7040 CANFORD SLIDING SHELF 370mm deep for 600 deep racks, universal, grey
- 12-7041 CANFORD SLIDING SHELF 370mm deep for 600 deep racks, universal, black
- 12-7042 CANFORD SLIDING SHELF 570mm deep for 800 deep racks, universal, grey
- 12-7043 CANFORD SLIDING SHELF 570mm deep for 800 deep racks, universal, black

Canford fixed and sliding rack shelves fix to the back of the mounting rack strip. Below are basic illustrations on how this is achieved. Shelf removed for clarity.



Captive nut accepting rack screw

Notches locate bracket into back of rack strip



Opposite hand fixed shelf bracket showing notches & captive nut

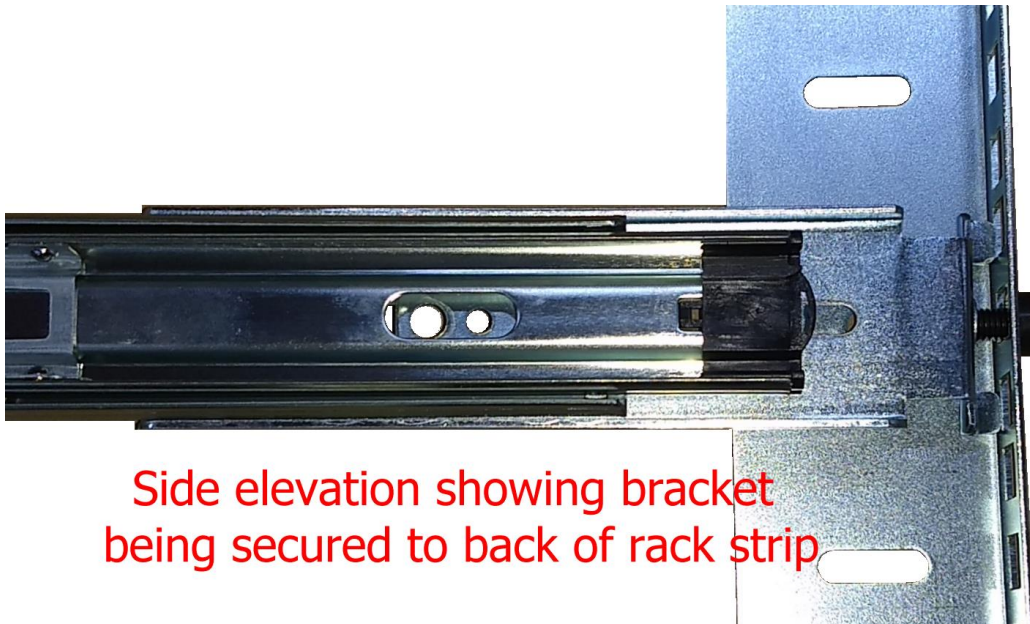
Canford fixed and sliding rack shelf mounting details



Shelf/bracket offered up to the back of mounting rack strip



Rack screw secures bracket through front of mounting strip



Side elevation showing bracket being secured to back of rack strip