



Technical Data Sheet

TEN47 TOURLINE MULTIPIN CONNECTORS

- 47-131** 37FC 37 pin female cable
- 47-132** 37MC 37 pin male cable
- 47-133** 37FP 37 pin female panel
- 47-134** 37MP 37 pin male panel
- 47-135** 37FDC dust cover for 37 pin female
- 47-136** 37MDC dust cover for 37 pin male
- 47-141** 54FC 54 pin female cable
- 47-142** 54MC 54 pin male cable
- 47-143** 54FP 54 pin female panel
- 47-144** 54MP 54 pin female panel
- 47-145** 54 FDC dust cover for 54 pin female
- 47-146** 54 MDC dust cover for 54 pin male
- 47-151** 85FC 85 pin female cable
- 47-152** 85MC 85 pin male cable
- 47-153** 85FP 85 pin female panel
- 47-154** 85MP 85 pin female panel
- 47-155** 85 FDC dust cover for 85 pin female
- 47-156** 85 MDC dust cover for 85 pin male
- 47-171** 150FC 150 pin female cable
- 47-172** 150MC 150 pin male cable
- 47-173** 150FP 150 pin female panel
- 47-174** 150MP 150 pin female panel
- 47-175** 150 FDC dust cover for 150 pin female
- 47-176** 150 MDC dust cover for 150 pin male
- 47-181** Female 25/37/54/85 pin, gold, (0.15 - 0.6)
- 47-182** Male 25/37/54/85 pin, gold, (0.15 - 0.6)
- 47-185** Female 25/37/54/85 pin, gold, (1.0 - 1.5)
- 47-186** Male 25/37/54/85 pin, gold, (1.0 - 1.5)
- 47-187** Female 150 pin contact, gold, 0.15 - 0.6
- 47-188** Male 150 pin contact, gold, (0.15 - 0.6)
- 47-191** Crimp Tool
- 47-192** Turret for 25/37/54/85 pin connector
- 47-193** Insertion tool for 25/37/54/85 pin contacts
- 47-194** Extract tool for 25/37/54/85 pin contacts
- 47-195** Turret for 150 pin connector
- 47-196** Insertion tool for 150 pin connector
- 47-197** Extraction tool for 150 pin connector

DESCRIPTION

A range of heavy duty, circular, bayonet-locking connectors, available in 25, 37, 54, 85 and 150 pole versions (suitable for 8, 12, 16, 24 and 48 channel connections).

Cable connectors have black-anodised turned metal housings, with glass-filled nylon, extra heavy duty spiral strain reliefs on 25, 37, 54 and 85 pin types, pressure gland on 150 pin type.

Panel connectors have a square mounting flange.

Female connectors have a bayonet locking ring, male connectors have locking grooves. Keyways ensure accurate alignment before contacts mate.

Male and female cable connectors may be joined in-line, permitting them to be used for extension cables.

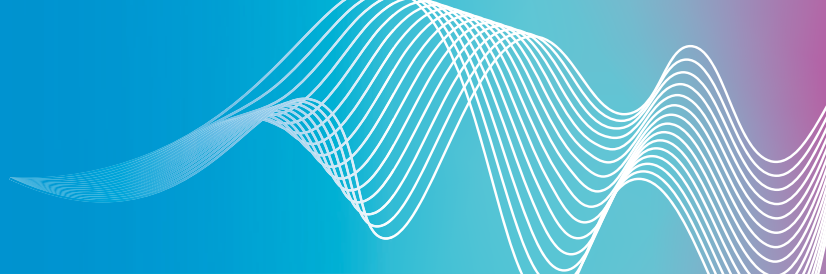
Connectors, when mated, offer protection to IP67 against dust and water. Dust caps are available for all types.

Contacts for the 25, 37, 54 and 86 pin types are available in two sizes to accommodate a wide variety of wire diameters. They can be either crimped or soldered onto the wire, and are available silver or gold plated. The two versions may be mixed within a connector - this is relevant where a helical screen is used, which requires the larger size, and the pair conductors require the smaller. For the 150 pin type, they are available in one size, gold plated.

Connector bodies and contacts are ordered separately as required.

Crimp tools (order alignment turret as required), contact insertion and extraction tools are also available.

Catalogue shows details of dust covers, contact pins and accessories.



PIN-OUT DETAILS

25 PIN TYPES			
Pair No	Hot +ve	Cold -ve	Screen
1	A	E	F
2	G	C	B
3	D	H	J
4	M	L	K
5	Q	P	N
6	W	S	R
7	T	X	Y
8	Z	V	U

37 PIN TYPES			
Pair No	Hot +ve	Cold -ve	Screen
1	E	F	A
2	B	C	G
3	H	J	D
4	S	T	K
5	L	M	U
6	V	W	N
7	P	R	X
8	a	b	g
9	c	d	j
10	e	f	m
11	n	p	h
12	r	s	k

54 PIN TYPES							
Pair No	Hot +ve	Cold -ve	Screen	Pair No	Hot +ve	Cold -ve	Screen
1	W	f	r	9	d	p	x
2	J	R	a	10	A	G	O
3	k	v	AC	11	Y	h	t
4	E	M	V	12	C	K	T
5	e	q	y	13	c	n	w
6	B	H	P	14	F	N	X
7	Z	j	u	15	g	s	AB
8	D	L	U	16	S	b	m

85 PIN TYPES							
Pair No	Hot +ve	Cold -ve	Screen	Pair No	Hot +ve	Cold -ve	Screen
1	A	B	C	13	w	x	y
2	E	F	H	14	z	AA	AB
3	J	K	L	15	AC	AD	AE
4	N	P	R	16	AF	AH	AJ
5	S	T	U	17	AK	AL	AM
6	X	Y	Z	18	AP	AR	AS
7	a	b	c	19	AT	AU	AV
8	d	f	g	20	AW	AX	AY
9	h	i	j	21	AZ	BA	BB
10	k	m	n	22	BC	BD	BE
11	p	q	r	23	BJ	BK	BL
12	t	u	v	24	BM	BN	BP

150 PIN TYPES

Pair No	Hot +ve	Cold -ve	Screen	Pair No	Hot +ve	Cold -ve	Screen	Pair No	Hot +ve	Cold -ve	Screen
1	1	2	3	17	50	51	52	33	100	101	102
2	5	6	7	18	53	54	55	34	103	104	105
3	8	9	10	19	57	58	59	35	56	81	106
4	11	12	13	20	60	61	62	36	107	108	109
5	14	15	16	21	63	64	65	37	110	111	112
6	17	18	19	22	66	67	68	38	113	114	115
7	21	22	23	23	69	70	71	39	116	117	118
8	24	25	26	24	72	73	74	40	119	120	121
9	27	28	29	25	75	76	77	41	122	123	124
10	20	30	31	26	78	79	80	42	125	126	127
11	32	33	34	27	82	83	84	43	139	128	129
12	35	36	37	28	85	86	87	44	130	131	132
13	38	39	40	29	88	89	90	45	133	134	135
14	41	42	43	30	91	92	93	46	136	137	138
15	44	45	46	31	94	95	96	47	140	141	142
16	47	48	49	32	97	98	99	48	143	144	145

