

Additional info to aid customers installing HS125 into their own panels:

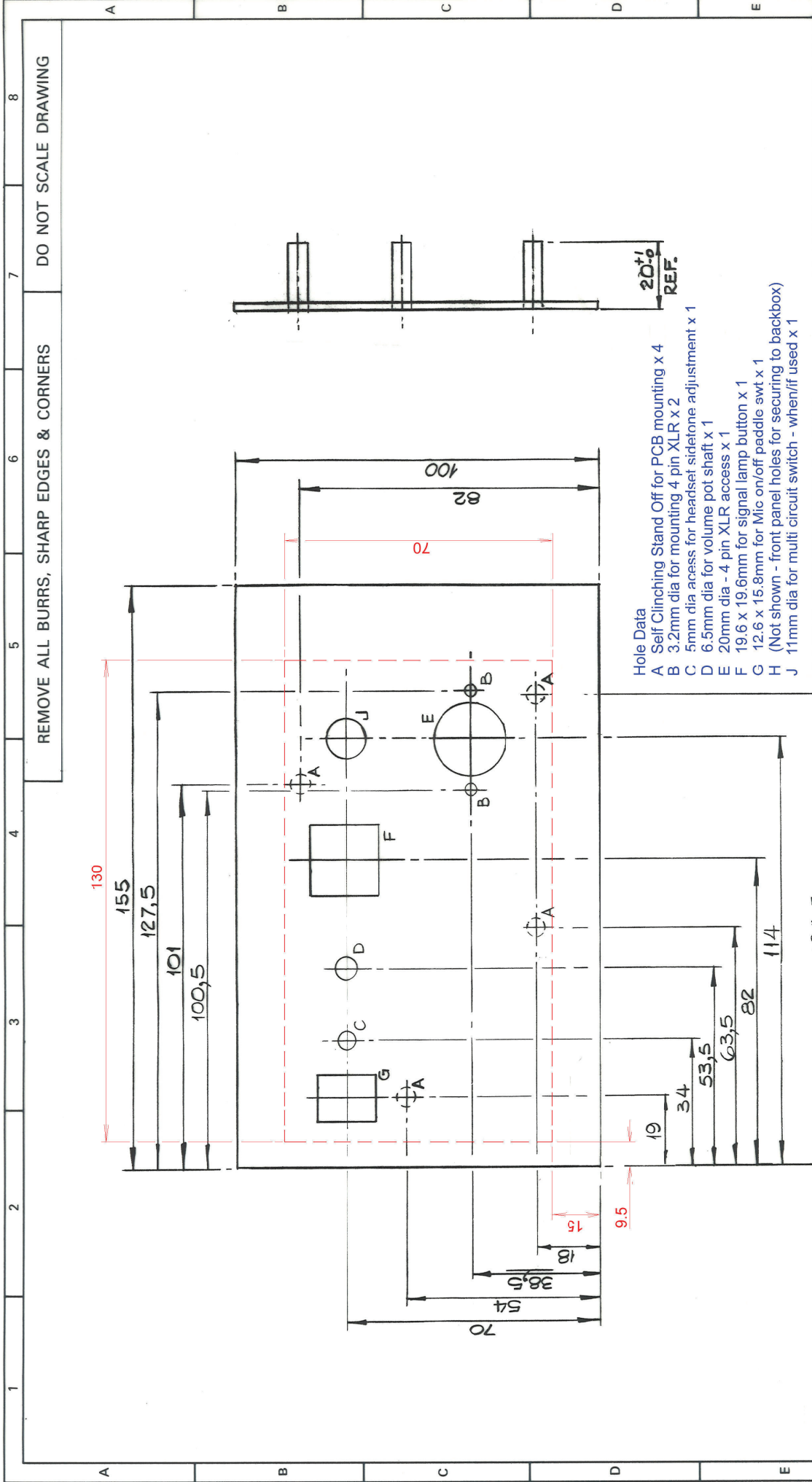
On the next page is something 'knocked up' from existing production drawings.

Diagram shows the cut outs normally found on the front panel of finished fixed headset station product (HS121 & HS122) with the PCB imposed onto such.

Hopefully this will aid the customer position the various knob and switch cut outs relative to the PCB that they wish to purchase.

Note the following:-

Mic on/off 'Paddle Switch'	Cutout 'G' on drawing	Fixed PCB mounted
Headset sidetone adjustment	Cutout 'C' on drawing	Fixed PCB mounted
Volume Pot	Cutout 'D' on drawing	Fixed PCB mounted
Signal Lamp Button	Cutout 'F' on drawing	Fixed PCB mounted
Multi Circuit Switch (optional)	Cutout 'J' on drawing	Fixed PCB mounted
4 Pin XLR	Cutout 'B' & 'E' on drawing	Flying lead to PCB (not fixed to PCB)
PCB fixings to panel	Location 'A' on drawing	Fixed on PCB



Geometric Tolerances To BS 308/ISO 1101		Material:	
Tolerances Unless Stated Otherwise:- Linear ± Angle ±		Surface finish To BS 308/ISO 1302 To BS 1134/ISO 468	Scale
All Dim's. In mm		Ra in μ	First Angle
Title:		Finish:	
Drg. No.		Sht	
Extract From 07-416 FOR INFO ONLY		Date	
Name: T. LEONARD		Chkd: [Signature]	
CANFORD AUDIO PLC		Used On: 27-122	
TYNE & WEAR UK		Ref: [Signature]	

REMOVE ALL BURRS, SHARP EDGES & CORNERS

DO NOT SCALE DRAWING

Iss.	Revision	CP No.	Date	Sig.
	PCB details shown in RED Additional info in Blue FOR INFO ONLY		May 14	CH