







20-221/2 ACTIVE RACKSHELF AS2

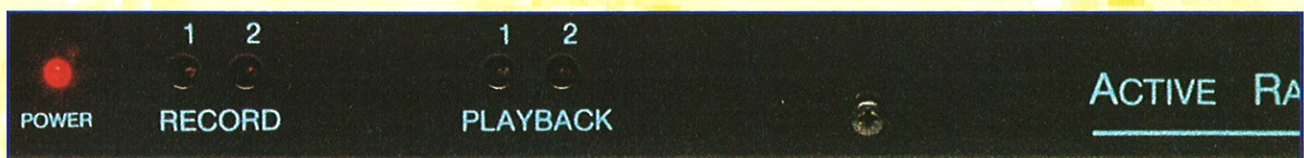


NO COMPROMISE INSTALLATION FOR SEMI-PRO EQUIPMENT

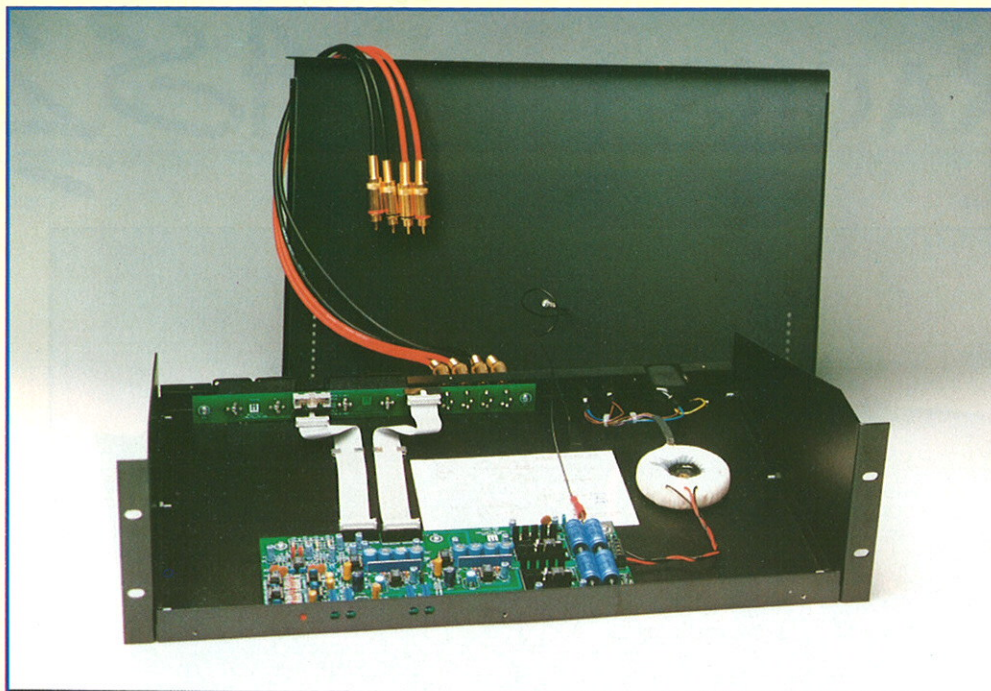
The Westwick Active Rackshelf **AS2** is the ideal solution to the problems of using semi-professional or domestic equipment in the professional studio environment. The equipment is firmly supported in a standard 19" rack and correctly interfaced with balanced studio lines. All level adjustments are readily accessible through the front panel for easy line-ups.

NO COMPROMISE.

-  SUPPORT FOR EQUIPMENT IN 19" RACK
-  BUILT IN HIGH PERFORMANCE PRO-LEVEL MATCHING & BALANCING
-  ALL PARAMETERS EASILY SELECTABLE BY INTERNAL JUMPERS
-  FRONT PANEL ACCESS TO MULTI-TURN LEVEL SETTINGS
-  STUDIO LEVELS UP TO +26dBu AT BOTH INPUT & OUTPUT
-  UPDATED AND UPRATED VERSION OF ORIGINAL **AS1** - 100s IN USE



AS2



AS2

ELECTRONIC SPECIFICATION

Input Impedance
Output Impedance
Gain

Frequency Response 20Hz
20kHz
-3dB

Max. Input Level
Max. Output Level (10k load)
Noise 20 - 20kHz, (Ref +4dBu)
Distortion (50 - 20kHz)
CMRR
Output Balance
Crosstalk (L/R,R/L :10kHz)

Record Circuit Balanced Input

>10k
75Ω
-7 to -28dB
or +2 to -21dB*
-0.15dB
-0.1dB
140kHz
+26dBu
+20dBu
-100dB
0.002%
-84dB
-90dB

Playback Circuit Balanced Output

>50k
75Ω
+0.5 to +20dB
-0.1dB
-0.1dB
130kHz
+20dBu
+26dBu
-100dB
0.008%
-70dB
-70dB

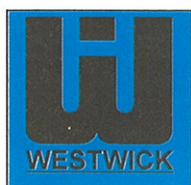
Power requirements: 220/240 volts or 110/120 volts, 50 - 60Hz, 10watts.

Either leg of the studio lines may be grounded for unbalanced operation, but in this mode the maximum output level of the playback circuit is +20dbu.

* Jumper selectable parameter.

Other selectable parameters:- Earth link/lift/float, hard earth to equipment, record circuit gain range, XLR pin2/pin3 hot.

- Equipment shelf area: 443W x 305D x 105H (17.4" x 12" x 4.15")
- Extra Deep Version: 443W x 460D x 105H (17.4" x 18.1" x 4.15")
- Adjustable backstop supplied for shallow equipment
- Protected under Patent No. 2198592



WESTWICK INSTALLATION
KIRKBY ON BAIN
WOODHALL SPA
LINCS. LN10 6YY



+44 (0) 1526 352950
+44 (0) 1526 354420



Manufactured in England

DISTRIBUTED BY :-

Subject to design change without notice

ACTIVE RACKSHELF AS3

ASSEMBLY and INSTALLATION

1. Mechanical Assembly

The Westwick Active Rackshelf AS3 is supplied flat-packed for ease of transport. Mechanical assembly requires only the securing of the side panels/rack mounting brackets to the main body using M4 countersunk screws provided into threaded receptacles on the sides of the body (6 places).

2. Backstop

A backstop is provided which may be used to prevent the supported equipment moving backwards into the rack if, for example, front panel push buttons are used enthusiastically.

To install locate the backstop behind the rear feet and secure to the top plate using the two plastic rivets supplied. The holes in the backstop are offset from the centreline to allow more flexibility in location. The plastic rivets may be released by prising up the centre pin.

3. Electronic set-up

3.1 Supported Equipment Earth

The electronics of the AS2 are designed to be able to work with or without a direct mains earth connection to the supported equipment, and the connections to the equipment 'float' a few ohms above ground. The supported equipment may therefore have its mains earth connected with impunity – if it has one. If it has no mains earth however the crosstalk will be severely impaired by this arrangement: jumper LK1 applies a direct audio 0v connection (to playback left) to avoid this. This jumper leaves the factory in the closed position, i.e. with the direct 0v connection. Only move this jumper if problems are experienced.

3.2 AS2 Earth

The ground of the AS2 should always be connected to mains earth. The earth pin of the IEC inlet is connected to the AS2 chassis. Pin 1 of all XLRs is also connected to chassis, conforming to accepted best practice. 0v audio may optionally be connected to chassis/ mains earth via LK2 with the following options:

- a) 0v audio connected to chassis ('Earth')
- b) 0v audio connected to chassis via 330R/0.01mF ('Lift')
- c) 0v audio floating ('Park')

3.3 Mains voltage

Selection for 240v or 120v is by a screwdriver operated switch on the rear panel.

The appropriate fuse should be fitted: 240v – 125mA, 120v – 250mA.

Severe damage may be caused to the equipment if this switch is incorrectly set, so -

CHECK THE POSITION OF THIS SWITCH BEFORE POWERING UP

Access to the internal jumpers may be obtained by removing 3 x M3 screws along the front edge of the unit and 3 x M3 screws from the rear edge of the top plate. Lift away the top plate for access, and ensure that the earth wire is securely attached when replacing.

Manufactured in England by

WESTWICK INSTALLATION LN11 9WD UK +44 (0) 1507 343873 FAX 343874