

### DESCRIPTION

The diagram illustrates the Shure P4000 System Processor, a central unit for audio processing. It features a top section with multiple input and output ports, a central control section with a display and buttons, and a bottom section with additional inputs and outputs.

**Top Section:**

- Inputs (Left):** Labeled "P4000 System Processor". Includes 4 inputs (1-4) for CLIP, +10, -10, and -40. Also includes 4 inputs for MUTE.
- Outputs (Right):** Labeled "SoundLink™ Digital Signal Processing". Includes 8 outputs (1-8) for CLIP, +10, -10, and -40. Also includes 8 outputs for MUTE.

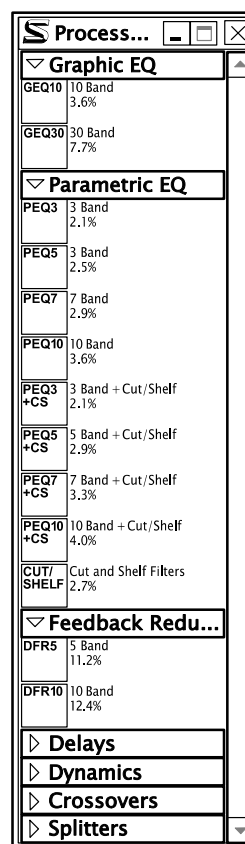
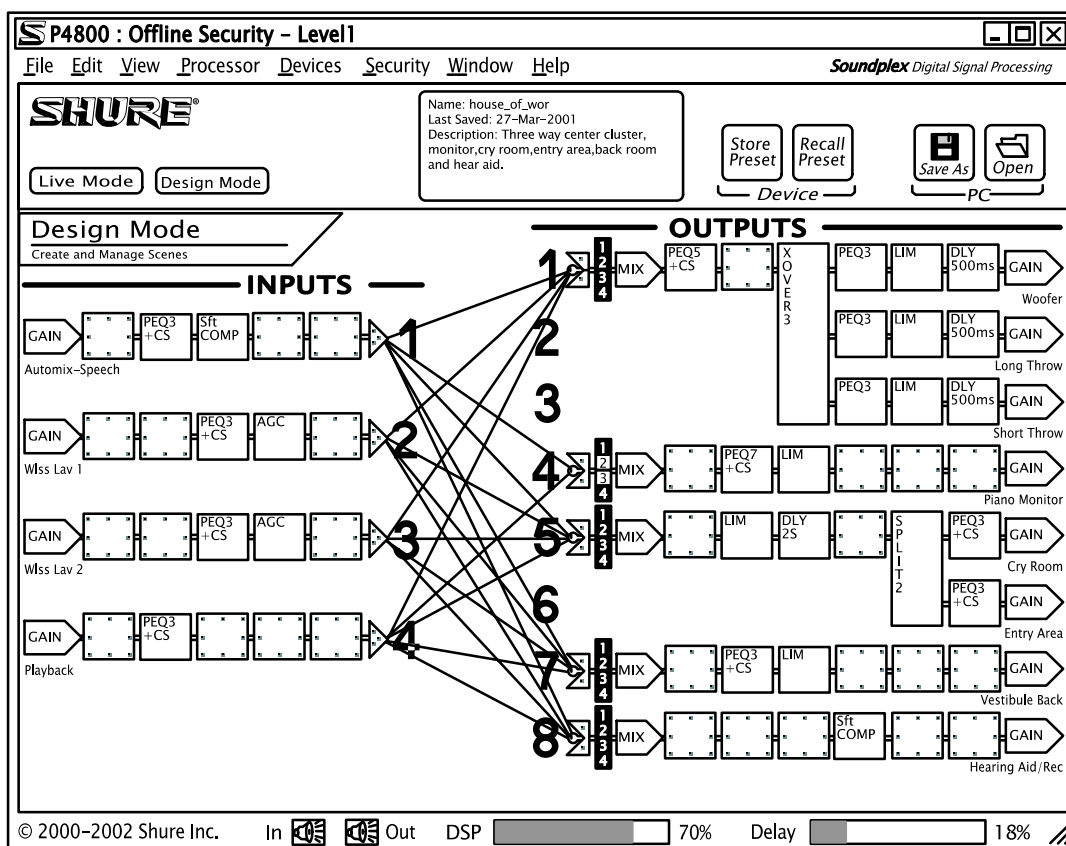
**Central Section:**

- Control Panel:** Features a "COMA" button and a "POWER" button.

**Bottom Section:**

- Inputs:** Labeled "SHURE LINKMIDI". Includes 4 inputs (1-4) for RS-422 and RS-232.
- Outputs:** Labeled "SHURE LINKMIDI". Includes 4 outputs (1-4) for RS-422 and RS-232.

## SOFTWARE FEATURES



With the P4800, the entire system can be designed, saved to disk, and loaded at the job site for easy set up. The P4800 also allows real-time design changes, so processing blocks can be added, removed or changed during system tuning. The security options allow complete lock of the system to prevent undesired tampering, or to restrict user access to certain parts of the system.

---

# P4800 SYSTEM PROCESSOR

---

---

## SPECIFICATIONS

---

### Frequency Response

20 Hz to 20 kHz +1, -3 dB

### Dynamic Range

100 dB minimum, A-weighted, 20 Hz to 20 kHz

### Sampling Rate

48 kHz

### Digital Signal Processing

32-bit floating-point resolution

### Polarity

Input to Output: non-inverting (inverting optional)

### Impedance

Input: 10 k $\Omega$

Output: 120  $\Omega$

### Input Clipping Level

+26dBu minimum

### Output Clipping Level

+22 dBu minimum

+2 dBu minimum with 20 dB pad engaged

### Total Harmonic Distortion

< 0.05% at 1kHz, +4 dBu, 20 Hz to 20 kHz

### Propagation Delay from Input to Output

<1.5 ms (Processing blocks add no latency.)

### Polarity

Input to output: non-inverting (inverting optional)

### Analog Audio Inputs

4 line level analog inputs, block connectors

Operation level defaults to +4 dBu, software

switchable to -10dBv

24-bit, 48 kHz A to D conversion

+26 dBu input clipping level @ 1% THD

### Analog Audio Outputs

8 line level analog outputs, block connectors

Operation level defaults to +4 dBu, software

switchable to -10dBv

24-bit, 48 kHz D to A conversion

+22 dBu output clipping level @ 1% THD (+2 dBu

with 20 dB pad)

### Control Pins

Voltage Supply: 5 Vdc, 100 mA (total)

Logic output current sinking ability: 500 mA

### Operating Voltage

100-240 Vac, 50/60 Hz (auto-switching)

### Maximum Power Drain

60W

### Temperature Range

Operating: -5° to 35° C (23° to 95° F)

Storage: -29° to 74° C (-20° to 165° F)

### Dimensions

19 in x 11 in x 1 3/4 in

### Weight

4.1 kg (9.0 lbs)

### Packaged Shipping Weight

6.0 kg (13.2 lbs)

---

## Furnished Accessories

Power Cable (P4800) ..... 95A8389

Power Cable (P4800E) ..... 95A8247

5-pin DIN Shure Link Cable ..... 95A8676

Hardware Kit ..... 90AB8100

12 Block Connector Terminals, 3-pin  
(for audio inputs and outputs)

2 Block Connector Terminals, 10-pin  
(for control inputs and outputs)

4 Rackmount Screws and Washers

## Optional Accessories

DRS10—Wallplate unit with 10-position rotary switch  
for preset control

# SHURE™

SHURE Incorporated Web Address: <http://www.shure.com>  
222 Hartrey Avenue, Evanston, IL 60202-3696, U.S.A.  
Phone: 847-866-2200 Fax: 847-866-2279  
In Europe, Phone: 49-7131-72140 Fax: 49-7131-721414  
In Asia, Phone: 852-2893-4290 Fax: 852-2893-4055  
Elsewhere, Phone: 847-866-2200 Fax: 847-866-2585